

Ultraflex4x4

UF-4514 Spherical Front Radius Arm Chassis Bush

Landrover Defender to 2017 and variants.

What does this bushing do ?

- 1./ It does not flop around and it is pre-loaded by the end nut.**
- 2./ It has a spherical sliding action for dampening road vibrations.**
- 3./ It gives much better on and off road handling.**
- 3./ It has grease nipple to force out the crud and give longer life.**

Instructions

Please study the picture below and install in the same manner shown.

Refer your manual for safe installation and removal of the NCR4514

NOTE: that the washers and the Poly urethane bushes need to be aligned as shown .

The cut out of the front washer is DOWN

The cut out of the rear washer is UP

The rear washer has the grease nipple *Use only Ultraflex4x4 Grease or Silicone.*

The two PU bushes are aligned as shown.

Yo must hold the washers with multi grip pliers to prevent the rear washer turning during tightening.

Use Loctite 262 stud lock on the M20 x 2.5 Nylock Nuts.

Tension to 130 Nm

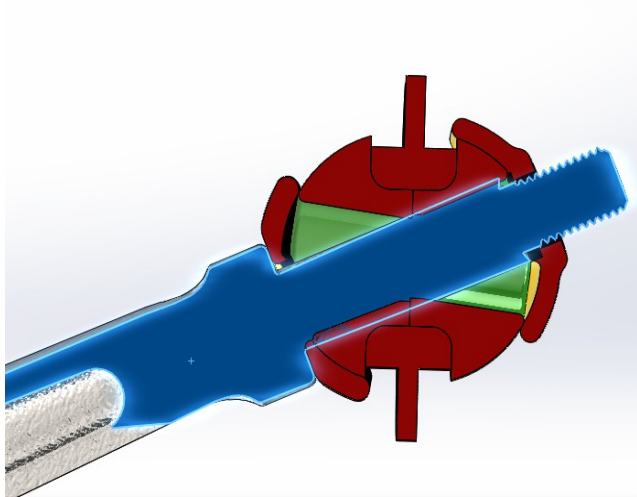


Illustration 1: Shown the Radius Arm installed at maximum down Left is front of car and as showing the Left side of the car.

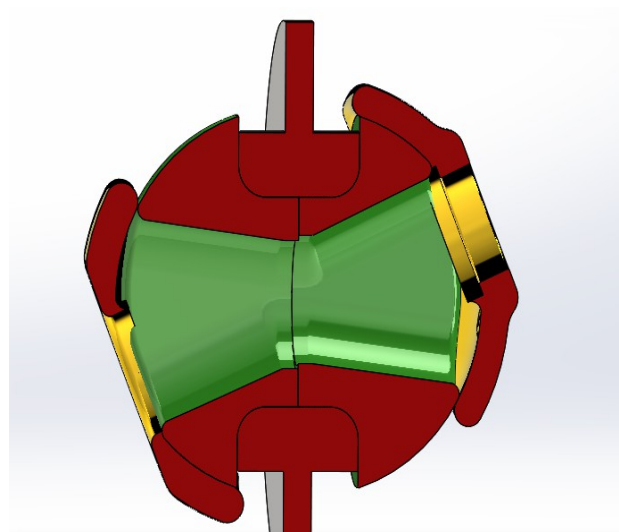


Illustration 2: Showing the arrangement of the Spherical Action bushes and washers with no Radius Arm installed.

Ultraflex4x4.com **Australia** [Facebook](#) [Ultraflex4x4 Community Support Group](#)

Eastern Australia [+61 2 8880 5202](tel:+61288805202)

United Kingdom [+44 1444 300041](tel:+441444300041)

United States [+1 302-321-7555](tel:+13023217555)

Western Australia [+61 8 7079 4200](tel:+61870794200)

Chile [+56 2 3328 1733](tel:+56233281733)

New Zealand [+64 6-888 0045](tel:+6468880045)